

Linear Exec Wave Kit

A large format stand helping you deliver your show stopping graphics. A stylish yet practical display option ideal for showrooms, shopping centres and exhibitions venues

features & benefits

- Portable and easy to assemble
- Anodised aluminium construction
- Unique frosted acrylic wings
- 75mm round modular post system
- Available in 3 different options
- Overall assembled size (mm):
2475(h) x 3000(w) x 500mm(d)



LK031-001 shown above incl 2x LCD mounts, 4x Linear shelves (lights and LCD monitor are not included) **If using this unit to full weight capacity please upgrade bases to LN102**



LK031-002 shown above incl 2x LCD mounts, 4x Literature holders (lights and LCD monitor are not included) **If using this unit to full weight capacity please upgrade bases to LN102**

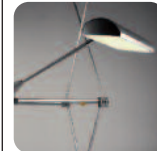


LK031-003 shown above incl 6x Literature holders (lights are not included) **If using this unit to full weight capacity please upgrade bases to LN102**

Recommended accessories:



Wheeled moulded case
AC506



LED Flood light
PS1050
Requires
US-LINEAR
Light bracket

hardware specifications

Hardware dimensions (mm):
2475(h) x 3000(w) x 500mm(d)
Frosted acrylic wing
995mm(h) x 255mm(w) x 40mm(d)
Linear shelf:
370mm (h) x 345mm (w) x 65mm (d)
Max weight: 5kg

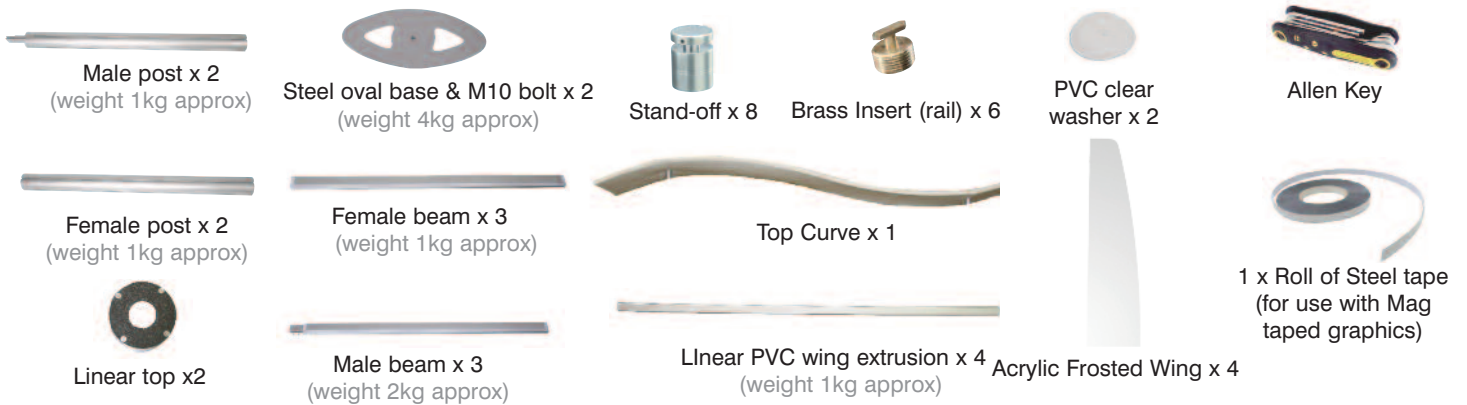
Small LCD bracket:
Max LCD size 20"

graphic size (mm):

Please refer to graphic template

Assembly Instructions

Exec Wave kit:



Important: If you are using the linear literature holders or the small LCD Bracket these must be attached before the linear top piece is attached



To attach the canopy, simply slot the legs of the canopy into the linear top piece



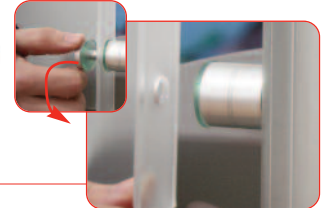
Screw the brass rail insert into the stand-off.



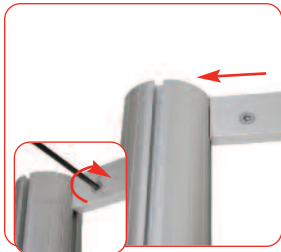
Fit the standoff into the rail channel, turn clockwise to secure.



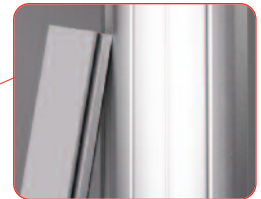
Unscrew and remove the stand-off cap.



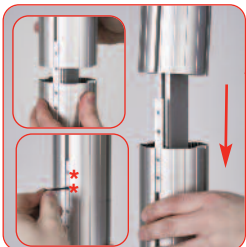
Align the drilled holes in the acrylic wings over the stand-off. Refit the stand-off cap to secure the acrylic



Attach horizontal beams to the vertical frame sides. Tighten locks using a 5mm allen key.



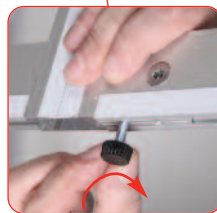
To attach the PVC wing simply click the PVC wing into the channel on the linear until fully secure



Align and slide female post over male post, tighten both grub screws using a 2mm allen key.



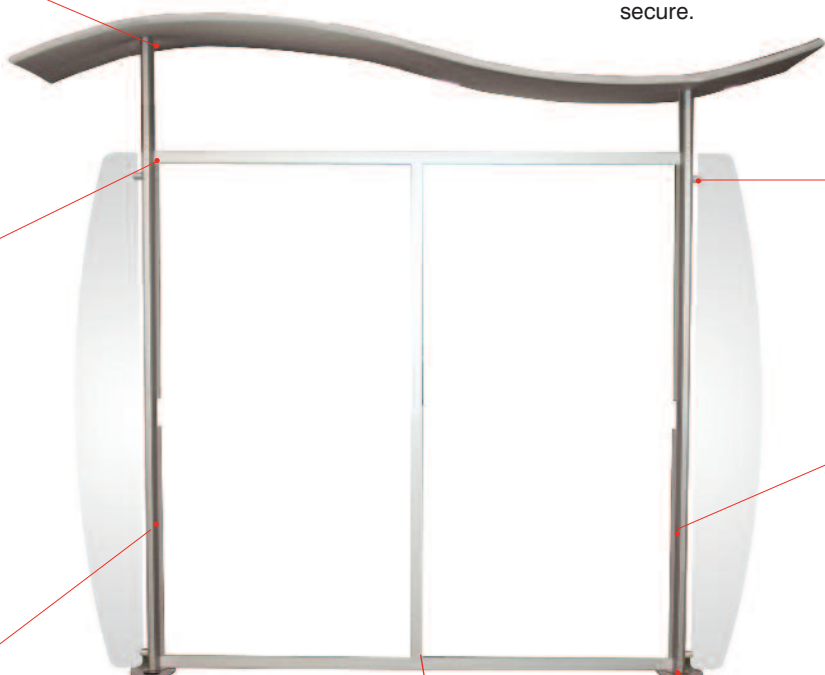
To attach the graphic simply apply mag tape to the graphic and align the graphic with the frame of the linear until in required position.



Attach adjustable foot to bottom horizontal rail.



Attach base to male post using M10 bolt and allen key. Ensure clear washer is between base & post. Repeat step for 2nd post.



Accessory Assembly Instructions

LK031-001

Linear shelf



To attach the linear shelf, move the shelf into required position



Tighten into position with an Allen Key.

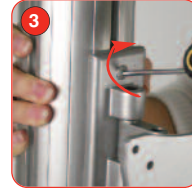
Small LCD bracket



To attach the screen, align screw fixings with holes on rear of LCD screen. Fix LCD bracket in place with screws provided.



Slide the LCD bracket into the channel. Move to the required position.



Once in position, tighten the bracket onto the linear post

LK031-002

Literature holder



Screw flat bar through top of literature holder loosely.

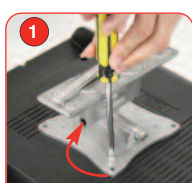


Slide bar down through channel in post.



Tighten into position with an Allen Key.

Small LCD bracket



To attach the screen, align screw fixings with holes on rear of LCD screen. Fix LCD bracket in place with screws provided.



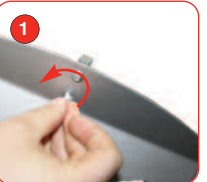
Slide the LCD bracket into the channel. Move to the required position.



Once in position, tighten the bracket onto the linear post

LK031-003

Literature holder



Screw flat bar through top of literature holder loosely.



Slide bar down through channel in post.

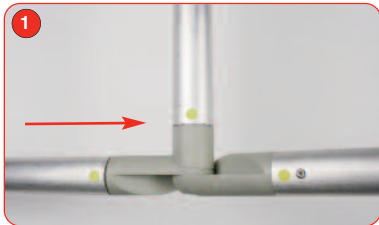


Tighten into position with an Allen Key.

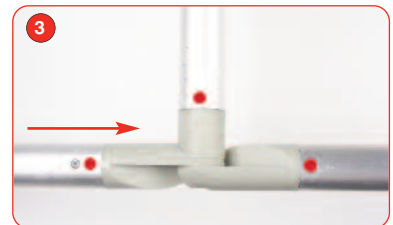
Canopy Assembly Instructions



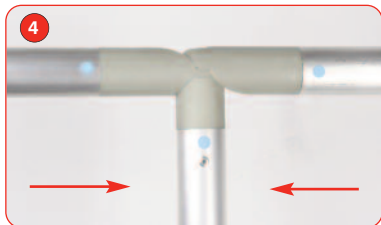
Canopy kit: 2x end piece, 1x centre piece, 4x connection pole, 1x canopy sock.



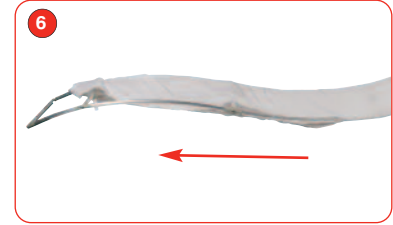
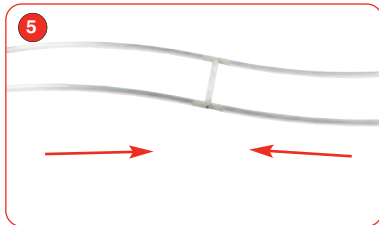
1 Attach the yellow end piece with the yellow connection poles making sure all of the blue coloured markers are facing in the same direction



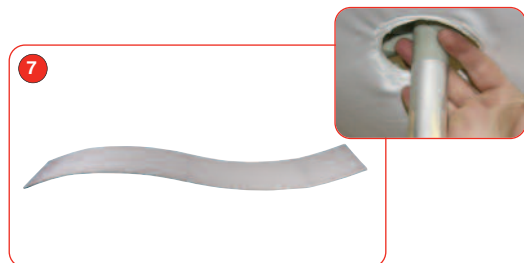
3 repeat steps 1 & 2 for the opposite side. Connecting the red markers together.



4 Connect both sides together using the centre piece making sure all of the blue markers are facing up.



6 Pull the canopy sock over the frame work until in required position.



7 Close the zip over the end of the frame. Make sure both supporting poles are through the bottom of the sock.